



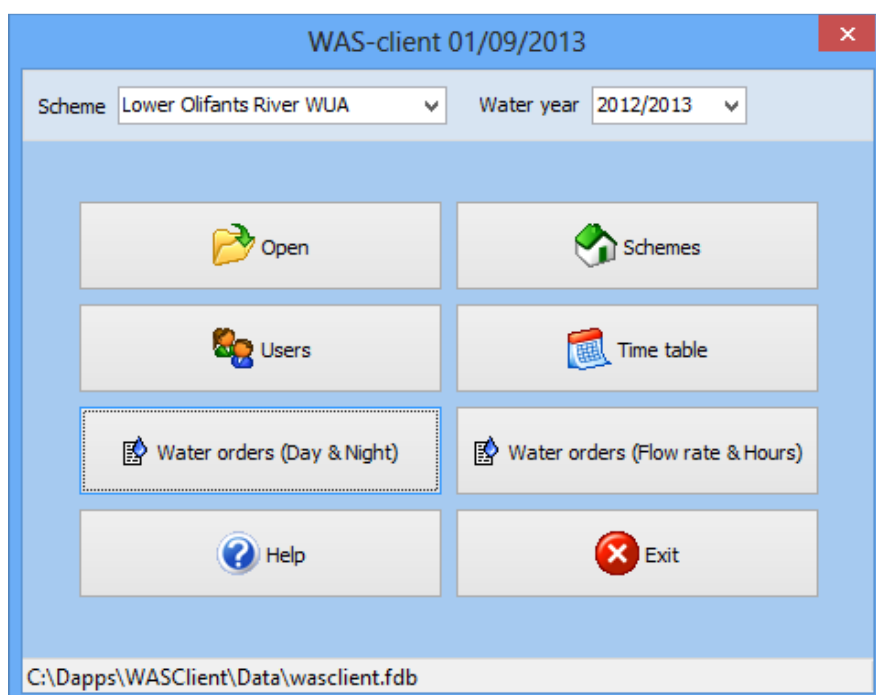
## WAS-client

### Purpose

The WAS-client software is specifically developed to be used by farmers to manage their water ordering and water usage information per abstraction point on a weekly basis. There is no limit on the number of abstraction points and water years that can be handled. Detailed help files in pdf-format can be viewed and printed on all screens.

The WAS-client program can:

- Capture any number of abstraction points and their related scheduled areas, water allocations and water usage information.
- Keep track of water use and water available per abstraction point and all abstraction points in total.
- Capture weekly water orders for any number of abstraction points.
- Upload water orders to the WAS database with a choice between the following two formats:
  - Day & night (12 hourly values). Water orders can be uploaded and downloaded to and from the WAS database.
  - Flow rate & hours. Water orders can only be uploaded to the WAS database.
- SMS's can be send from the WAS program to verify that the water orders have been taken up in the WAS database.
- Download water orders from the WAS database for all the abstraction points that are listed in the WAS-client database.
- Generate a weekly time table per water year.
- Copy the list of users (abstraction points) between water years.
- Keep a history of all water use information per water year.



## Scheme & Water year

The scheme and water year can be selected respectively from the dropdown boxes as shown below. The list of available schemes is captured on the *Scheme setup* form.



The image shows a light blue rectangular box containing two dropdown menus. The first dropdown menu is labeled 'Scheme' and has 'Lower Olifants River WUA' selected. The second dropdown menu is labeled 'Water year' and has '2011/2012' selected. Both dropdown menus have a small downward-pointing arrow on the right side.

## Buttons

- **Open:** Open the WAS-client database. The default data file name is *wasclient.fdb* and the default folder name is *c:\wasclient\*. The WAS-client software will open the default database automatically on start-up and there should be no need to open a database manually. The database will also be closed automatically on exit.
- **Schemes:** Open the *Scheme setup* form which is used to capture and maintain the list of irrigation schemes.
- **Users:** Open the *Users* form which is used to capture the list of users (abstraction points) and their respective water allocation information per water year.
- **Time table:** Open the *Week time table* form which is used to generate the weekly time table for every water year.
- **Water orders (Day & Night):** Open the *Water orders* form (12 hourly format) which is used to capture and upload or download water orders to and from the WAS database.
- **Water orders (Flow rate & Hours):** Open the *Water orders* form (flow rate & duration format) which is used to order water in this specific format. No water orders can be downloaded in this format.
- **Help:** Display this help file.
- **Exit:** Exit the WAS-client program.